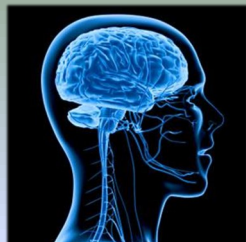


# Community Education Workshops

Fall 2014



In partnership with KPU Counselling Services, workshops are open to all students, employees, and members of the general public. All sessions are **FREE!**

Certificate awarded upon completion of all workshops.

Come to one workshop; come to all!

**Wednesday Mornings**

**10am to 12pm**








*Just Show Up!*

**LOCATION:**

**Kwantlen Polytechnic University**

**8771 Lansdowne Road**

**Room 1420**

<b>1</b>	<b>The Development of Addiction</b> <i>Introducing the concepts of use, misuse, and addiction.</i>		October 1
<b>2</b>	<b>Chemicals and the Body</b> <i>How our body responds to drugs and behaviors.</i>		October 8
<b>3</b>	<b>The Process of Recovery</b> <i>What is treatment and how might relapse be prevented?</i>		October 22
<b>4</b>	<b>The Family Context</b> <i>Family dynamics where problems are present.</i>		October 29
<b>5</b>	<b>Gambling</b> <i>How Much is Too Much?</i>		November 5
<b>6</b>	<b>Helping Others</b> <i>What you can do to help a loved one.</i>		November 12
<b>7</b>	<b>Drugs in Our Society</b> <i>A public health approach to illegal drugs.</i>		November 19

**Please note the location and date of each workshop!**

**RASS**

Richmond  
Addiction  
Services  
Society

vancouver  
coastalHealth  
*Promoting wellness. Ensuring care.*

Richmond

  
KWANTLEN  
POLYTECHNIC  
UNIVERSITY

**For Information:** [info@richmondaddictions.ca](mailto:info@richmondaddictions.ca)

**604-270-9220**